



The handcrafted free form repoussé weathervanes at SURFSIDE were made by West Coast Weathervanes, Santa Cruz, California, a unique consortium of artists working together under the leadership of LizAnne and Ken Jensen. Hand crafted, double sided, weather vanes are extremely time consuming to make. Each artist creates a weather vane from start to finish and individually signs the vanes.

Starting with a paper pattern unique to each weather vane design, they trace the pattern onto a sheet of copper and then cut the individual pieces out by hand with metal shears. To give texture to the surface they use custom shaped hammers to create the surface textures like the mermaid's scales. The three dimensional shaping of the design is done with rawhide hammers on leather sand pillows, anvils or custom blocks. Because no molds are used, each weather vane has individual variations making it unique.

Two opposite halves of each section of the design are made and are soldered together to form a hollow body. This can be tricky since the pieces must match exactly. The individual sections are joined together. Just before closing up the final seam on the vane, a penny from the year it is made (or in the case of Surfer Chris, the year he was born) is slipped inside – an old weather vane making tradition that symbolizes good luck.

Julia the Mermaid

We picked a beautiful mermaid to greet friends as they enter SURFSIDE. A mermaid is a legendary aquatic creature with the head and torso of a human female and the tail of a fish. Much like Sirens, mermaids in stories would sometimes sing to sailors and enchant them, distracting them from their work and causing ship wrecks. They are also said to have taken drowning sailors down to their underwater kingdom.

Our mermaid, Julia, is 4 foot mermaid with a copper torso tail and gold leaf plated head and tail. The emerald colored eyes are made from handcrafted emerald glass eyes with blue pupils.



Gray Whale

The Gray Whale weather vane consists of a breaching copper gray whale with a brass splash. The whale's eyes are made from handcrafted glass eyes with black pupils.



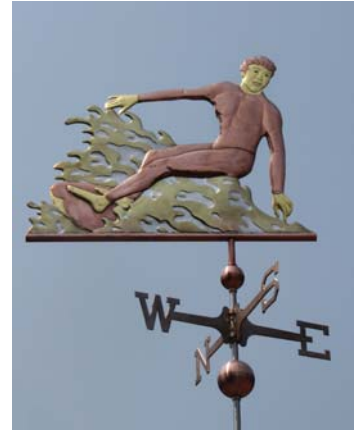
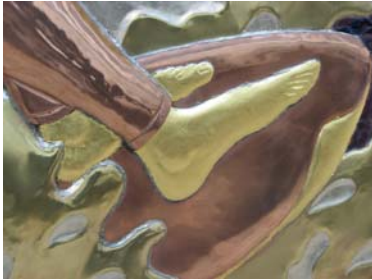
Seahorse

The Seahorse weather vane, which was picked to compliment the stunning Seahorse weather vane atop The Dunes Club at the north end of the Narragansett Town beach, consists of a copper Seahorse and a brass and gold leaf plated ferns and sea floor. The Seahorses eyes are made from translucent emerald colored glass jewels.



Surfer Chris

Our largest weather vane faces overlooks the surfers at the southern end of Narragansett's town beach. The design was taken from an actual photo of a local surfer, "Chris" surfing off the Narragansett's Point Judith lighthouse on July 4, 2006. The surfer's wetsuit and hair are copper, the face, feet and hands are gold leaf and the waves are cut out of heavy brass and then plated with a combination of gold leaf and palladium. The brown colored eyes are made from translucent colored glass.



The nautically inspired weathervanes at SURFSIDE were made by West Coast Weathervanes (WWW.westcoastweathervanes.com) of Santa Cruz, California. We encourage you to visit their site. They are true masters of the art of making weather vanes.