



## 2 BEDROOM

### FLOOR PLAN OPTIONS

The floor plans on the following pages are available as *2 Bedroom* condominiums at Surfside.

- Baltic
- Bengal
- Bering
- Caribbean
- Caspian
- Cortez
- Tasman
- Tigris

*Note: These floor plans are for illustrative purposes only. Dimensions are approximate and are subject to change.*



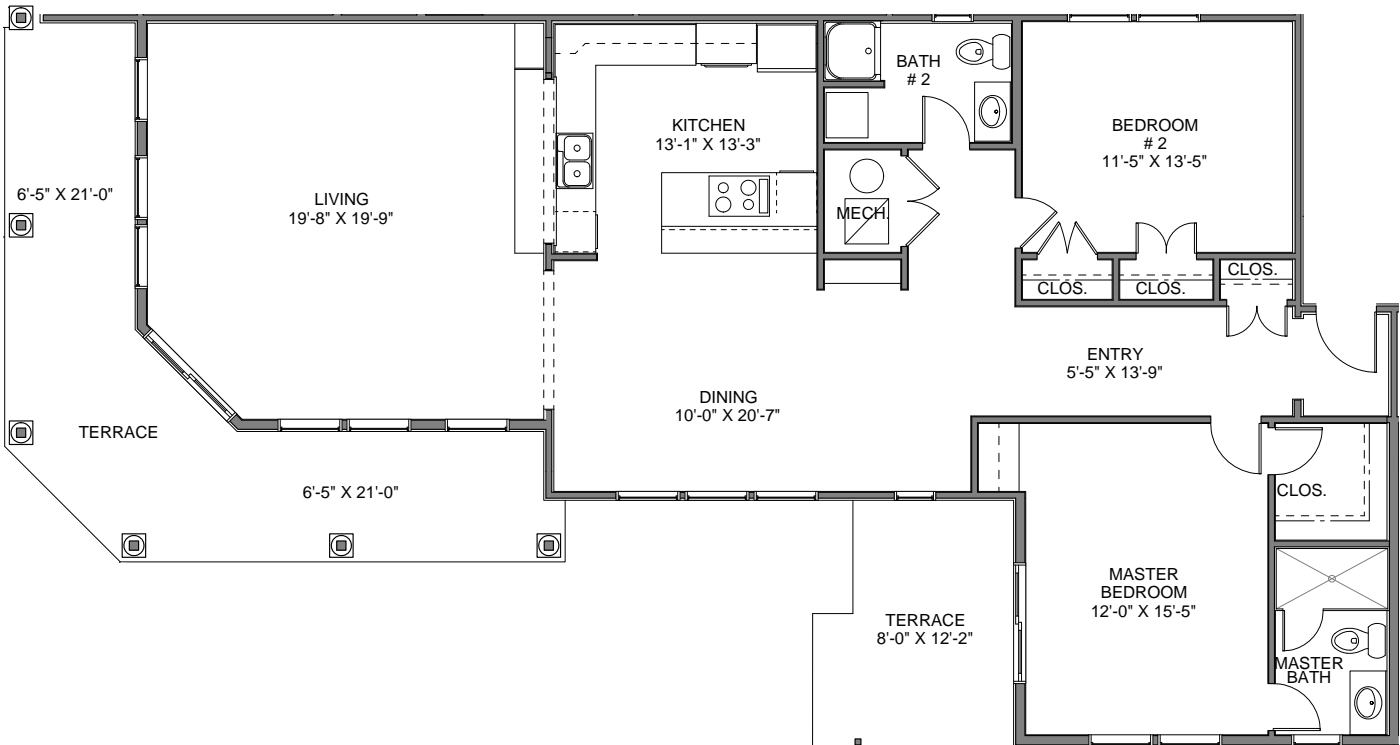
# BALTIC

2 Bedroom

2 Bathroom

## FEATURES

- Approx. 1,500 square feet
- Panoramic ocean front views
- Large private lawn (over 4,200 square feet)
- Two large terraces
- Granite | Marble | Corian countertops
- Professional grade appliances
- Hardwood floors in living, dining and kitchen
- Master w|walk-in closet
- Central air conditioning | heating
- Washer & dryer



Note: These floor plans are for illustrative purposes only. Dimensions are approximate and are subject to change.

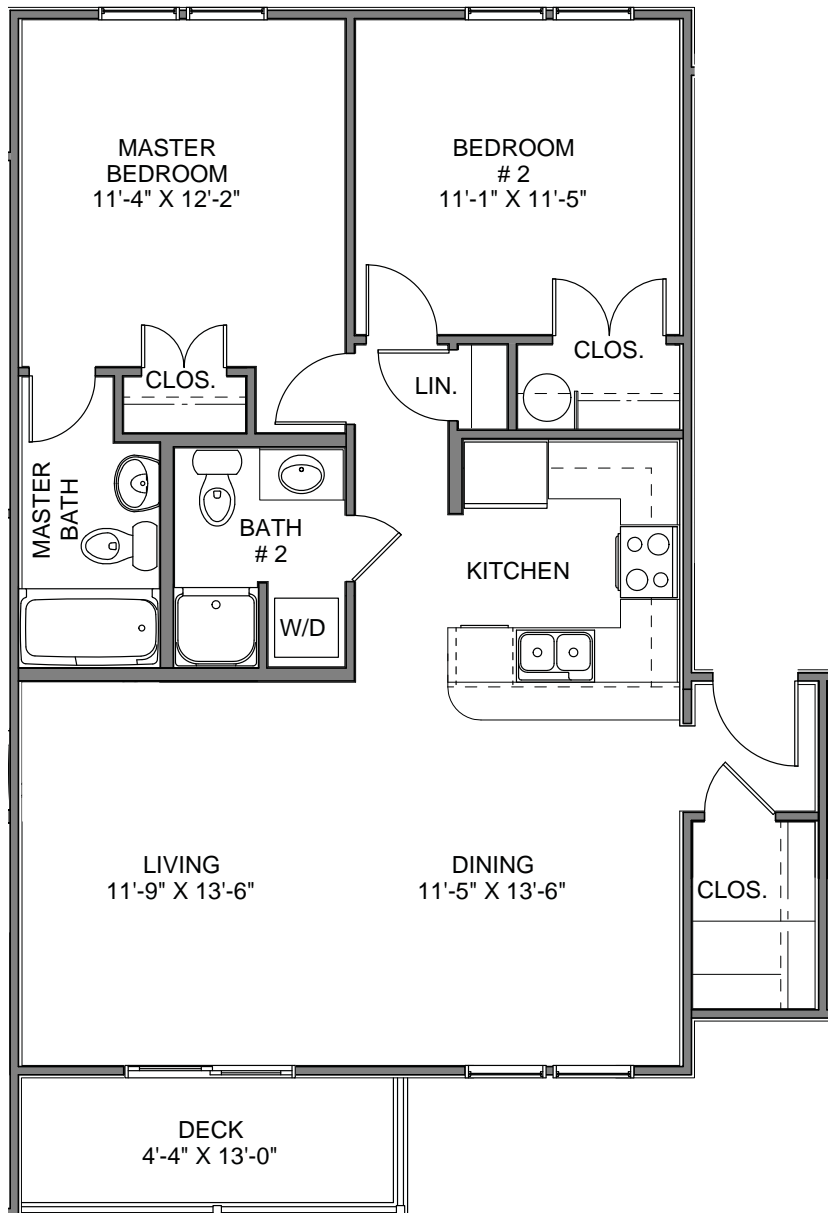


# BENGAL REVERSE

- 2 Bedroom
- 2 Bathroom

## FEATURES

- Approx. 900 square feet
- Outdoor terrace or deck (size & configuration vary)
- Granite countertops
- Stainless steel appliances
- Central air conditioning | heating
- Washer & dryer



Note: These floor plans are for illustrative purposes only. Dimensions are approximate and are subject to change.



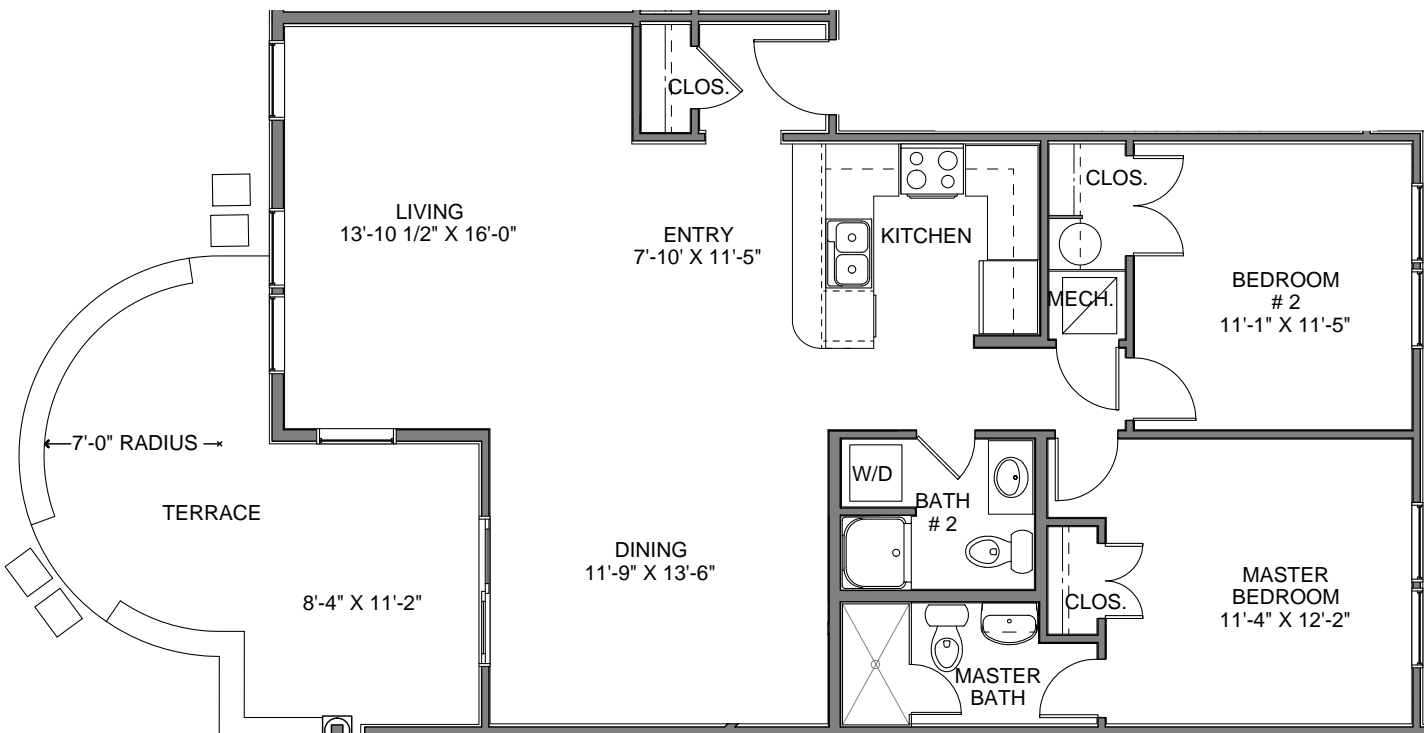
# BERING I

2 Bedroom

2 Bathroom

## FEATURES

- Approx. 1,000 square feet
- Outdoor terrace (size & configuration vary)
- Granite | Marble | Corian countertops
- Professional grade appliances
- Hardwood floors in living, dining and kitchen
- Master bath w/over-sized shower and frameless glass door
- Central air conditioning | heating
- Washer & dryer



Note: These floor plans are for illustrative purposes only. Dimensions are approximate and are subject to change.

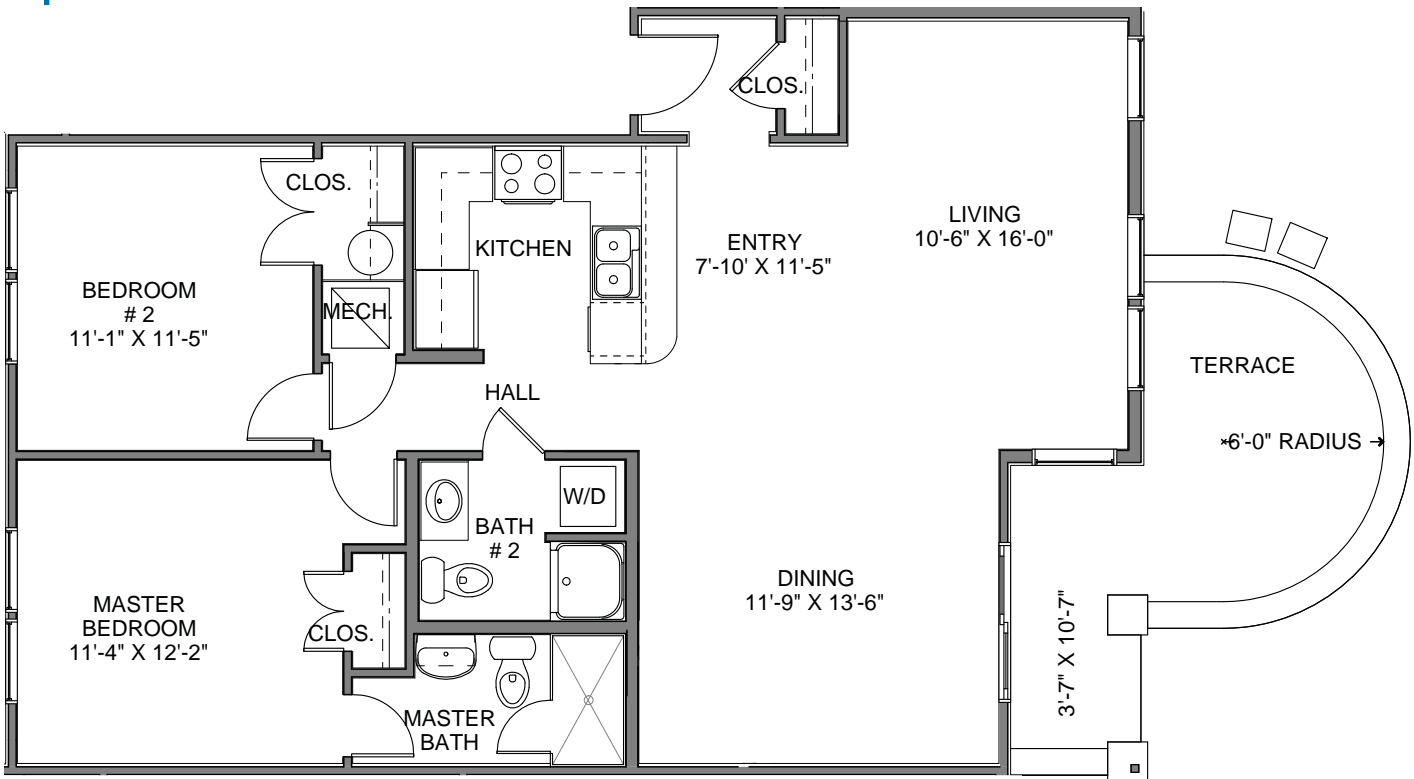


# BERING I REVERSE

- 2 Bedroom
- 2 Bathroom

## FEATURES

- Approx. 1,000 square feet
- Outdoor terrace (size & configuration vary)
- Granite | Marble | Corian countertops
- Professional grade appliances
- Hardwood floors in living, dining and kitchen
- Master bath w/over-sized shower and frameless glass door
- Central air conditioning | heating
- Washer & dryer



Note: These floor plans are for illustrative purposes only. Dimensions are approximate and are subject to change.

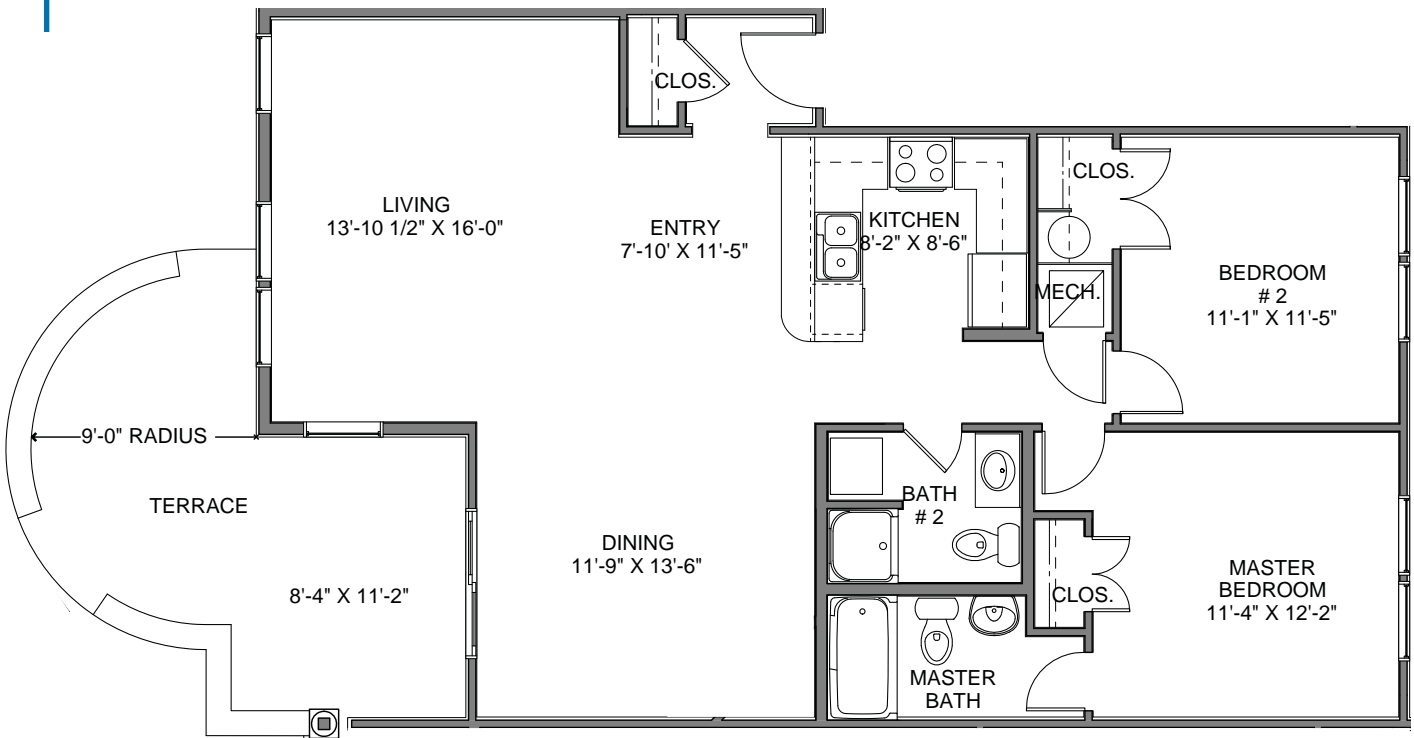


# BERING II

- 2 Bedroom
- 2 Bathroom

## FEATURES

- Approx. 1,000 square feet
- Outdoor terrace or deck (size & configuration vary)
- Granite countertops
- Stainless steel appliances
- Central air conditioning | heating
- Washer & dryer



Note: These floor plans are for illustrative purposes only. Dimensions are approximate and are subject to change.

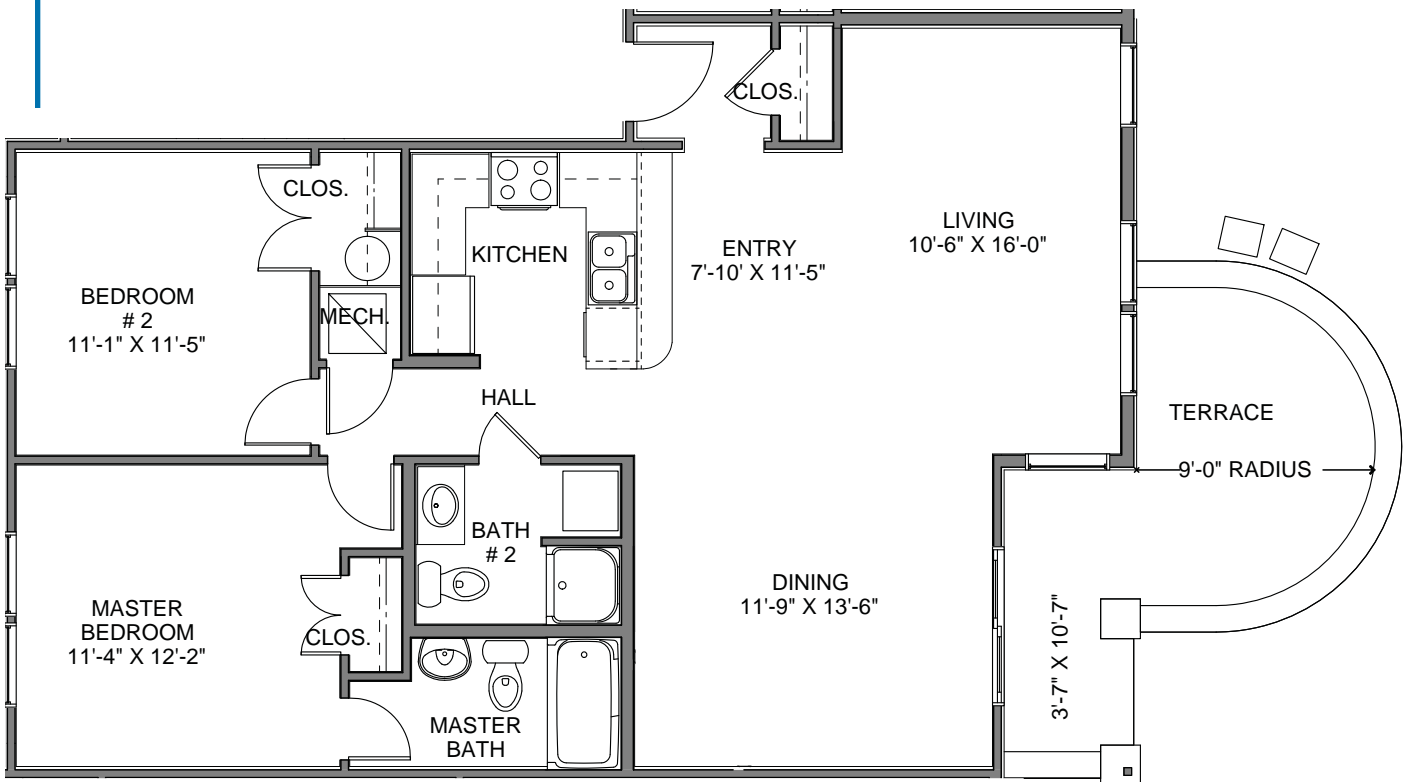


# BERING II REVERSE

- 2 Bedroom
- 2 Bathroom

## FEATURES

- Approx. 1,000 square feet
- Outdoor terrace or deck (size & configuration vary)
- Granite countertops
- Stainless steel appliances
- Central air conditioning | heating
- Washer & dryer



Note: These floor plans are for illustrative purposes only. Dimensions are approximate and are subject to change.



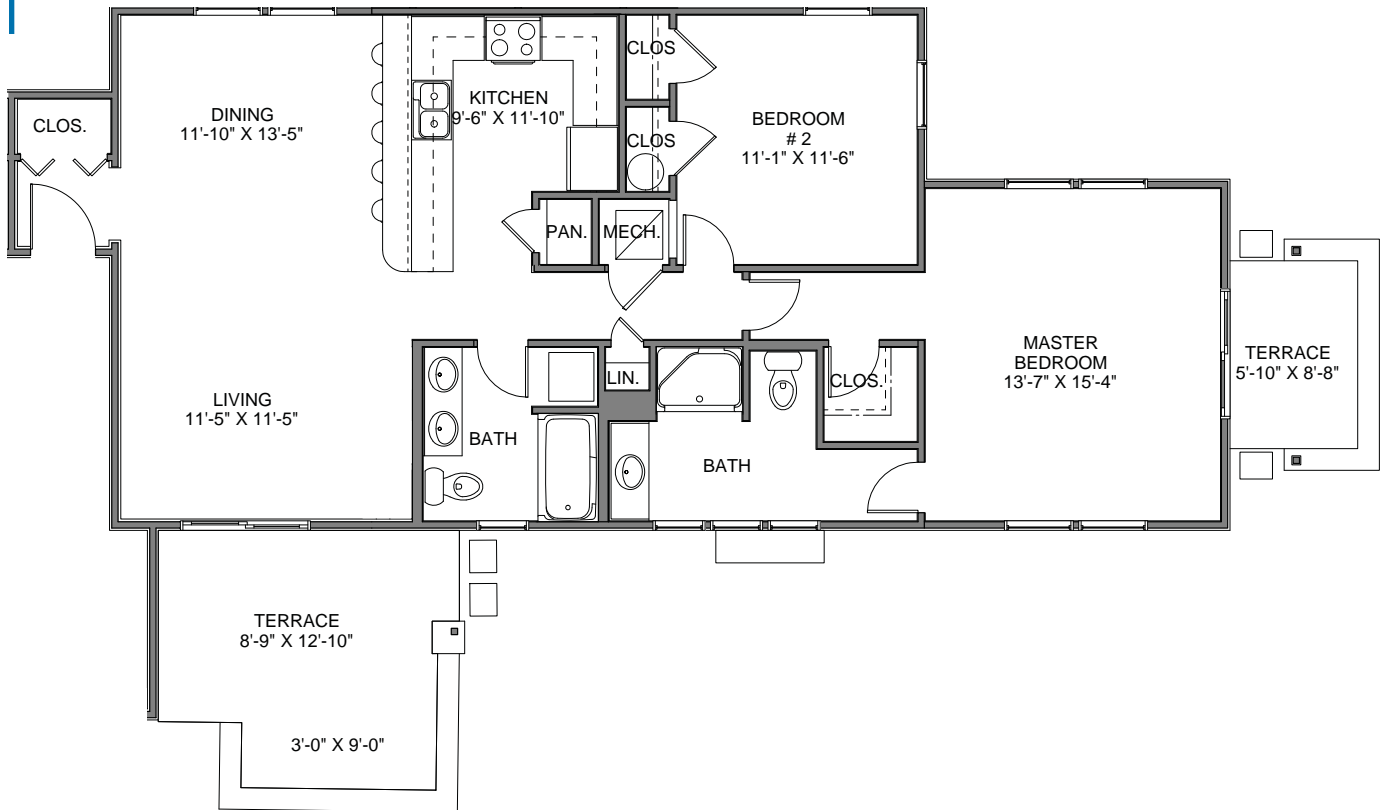
# CARIBBEAN

2 Bedroom

2 Bathroom

## FEATURES

- Approx. 1,140 square feet
- Two large outdoor terraces
- Granite | Marble | Corian countertops
- Professional grade appliances
- Hardwood floors in living, dining and kitchen
- Master w|walk-in closet
- Central air conditioning | heating
- Washer & dryer



Note: These floor plans are for illustrative purposes only. Dimensions are approximate and are subject to change.

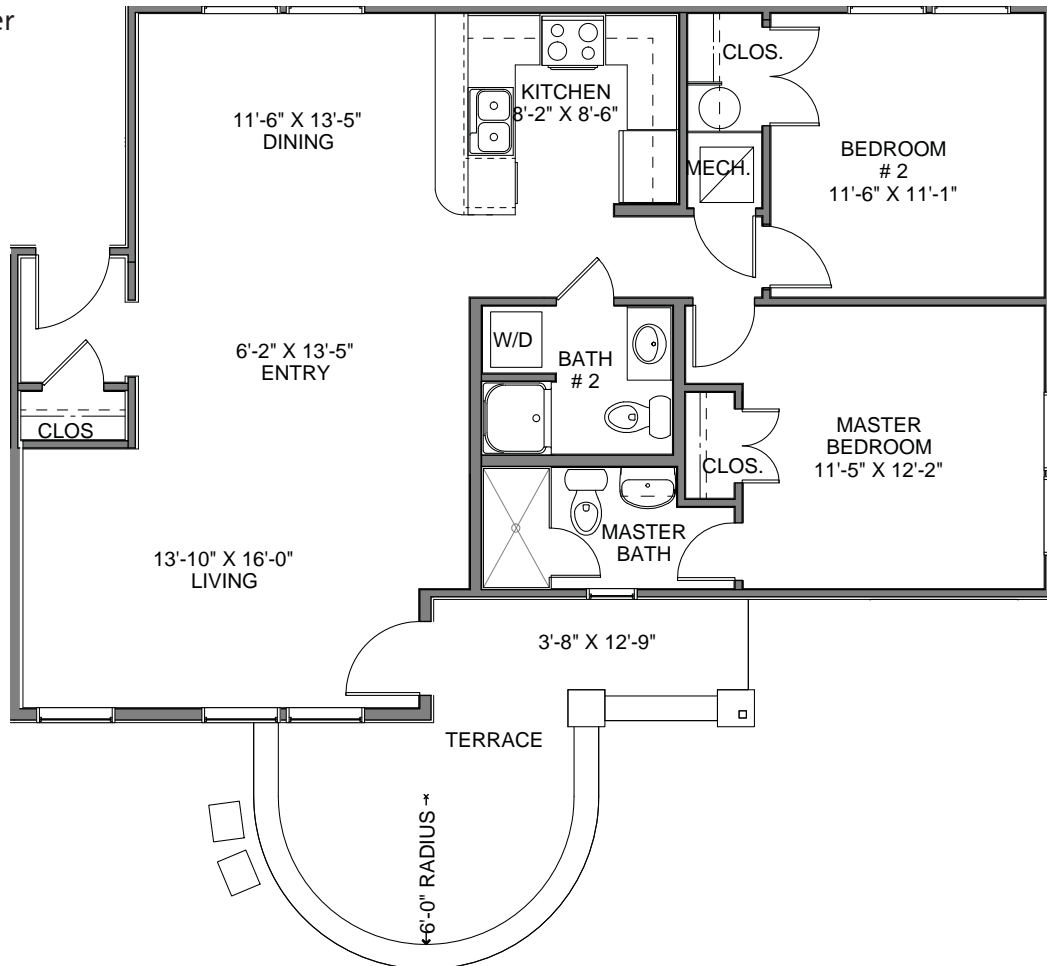


# CASPIAN I REVERSE

- 2 Bedroom
- 2 Bathroom

## FEATURES

- Approx. 1,000 square feet
- Outdoor terrace (size & configuration vary)
- Granite | Marble | Corian countertops
- Professional grade appliances
- Hardwood floors in living, dining and kitchen
- Master bath w|over-sized shower and frameless glass door
- Central air conditioning | heating
- Washer & dryer



Note: These floor plans are for illustrative purposes only. Dimensions are approximate and are subject to change.

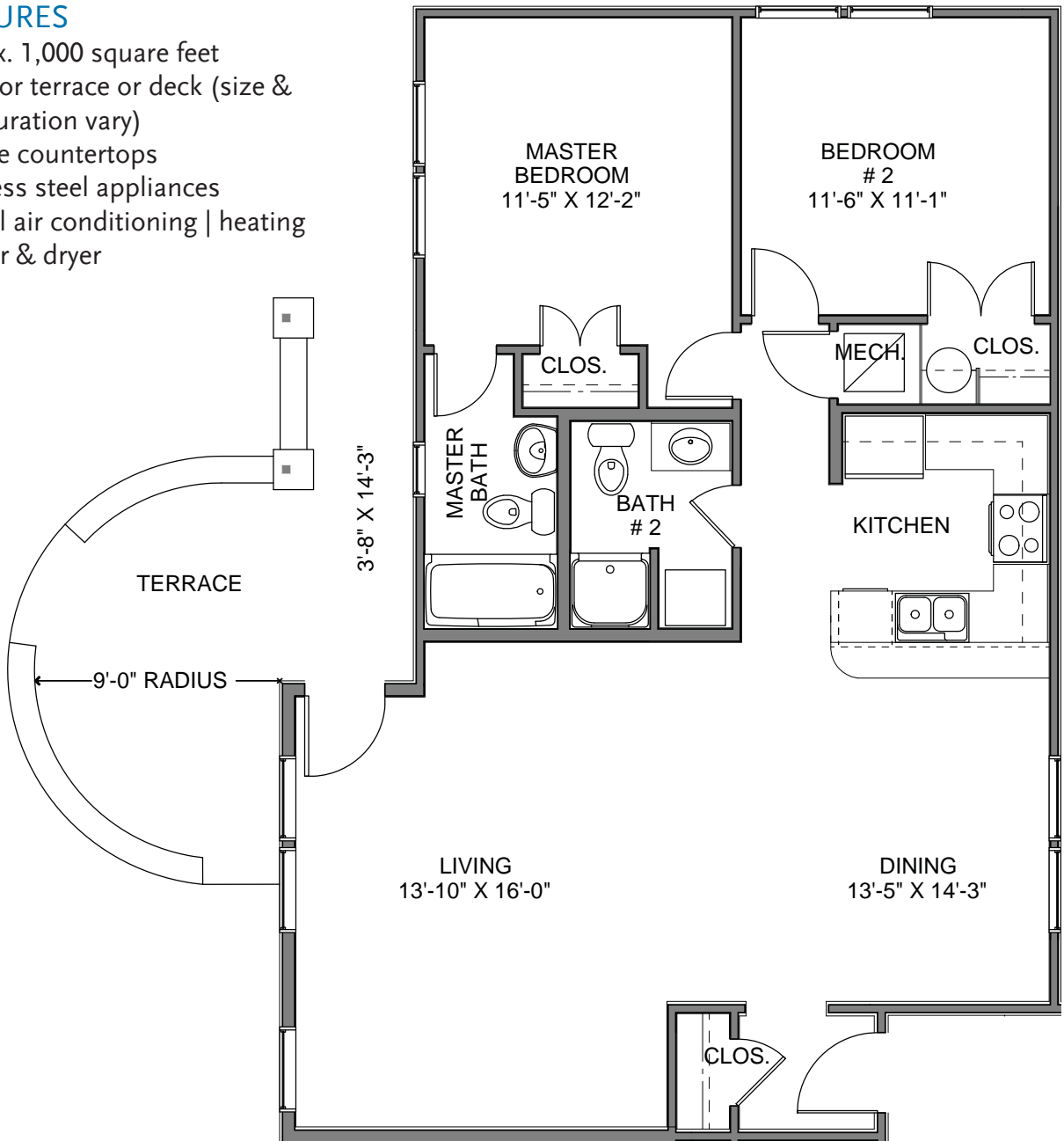


# CASPIAN II

- 2 Bedroom
- 2 Bathroom

## FEATURES

- Approx. 1,000 square feet
- Outdoor terrace or deck (size & configuration vary)
- Granite countertops
- Stainless steel appliances
- Central air conditioning | heating
- Washer & dryer



Note: These floor plans are for illustrative purposes only. Dimensions are approximate and are subject to change.

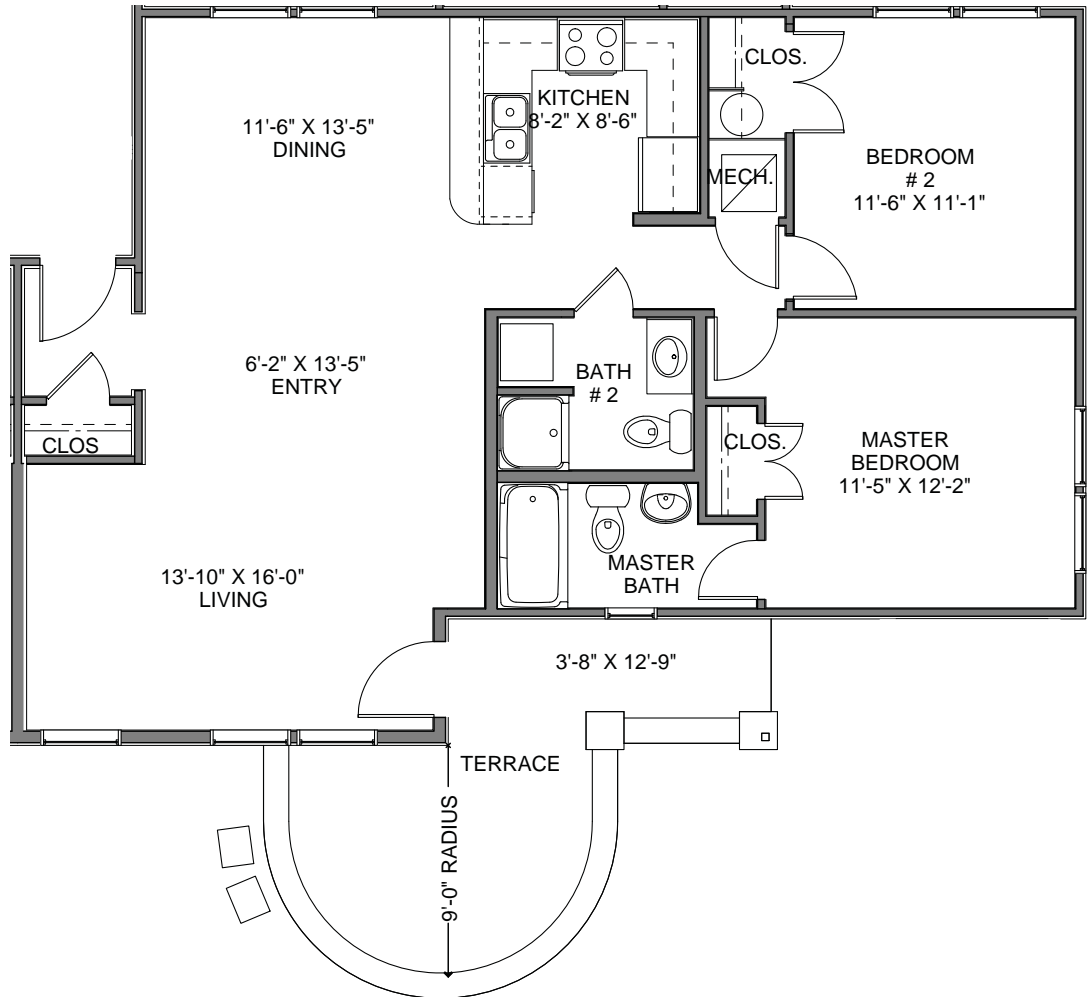


# CASPIAN II REVERSE

- 2 Bedroom
- 2 Bathroom

## FEATURES

- Approx. 1,000 square feet
- Outdoor terrace or deck (size & configuration vary)
- Granite countertops
- Stainless steel appliances
- Central air conditioning | heating
- Washer & dryer



Note: These floor plans are for illustrative purposes only. Dimensions are approximate and are subject to change.

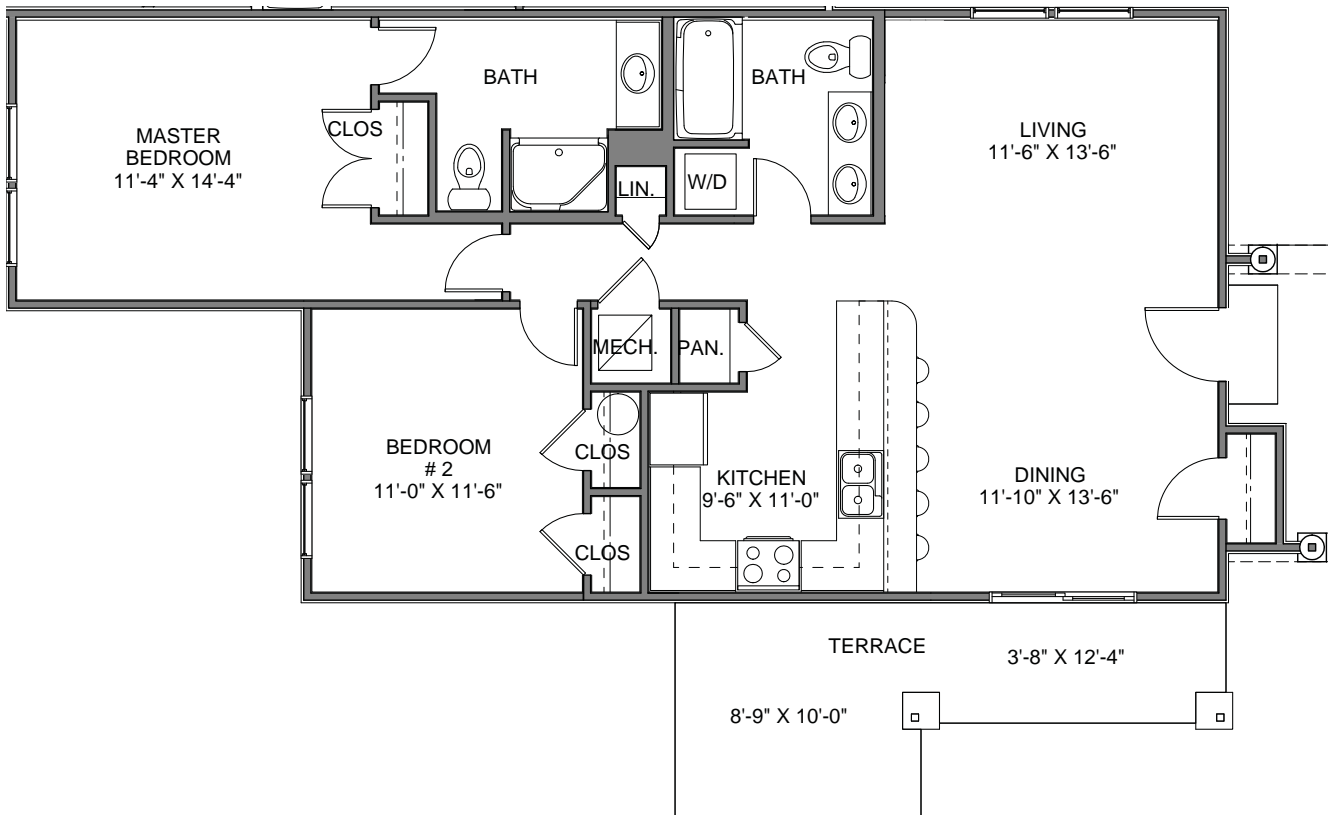


# CORTEZ

- 2 Bedroom
- 2 Bathroom

## FEATURES

- Approx. 1,000 square feet
- Ocean views
- Blue stone terrace
- Granite | Marble | Corian countertops
- Professional grade appliances
- Hardwood floors in living, dining and kitchen
- Master bath w/over-sized shower and frameless glass door
- Central air conditioning | heating
- Washer & dryer



Note: These floor plans are for illustrative purposes only. Dimensions are approximate and are subject to change.



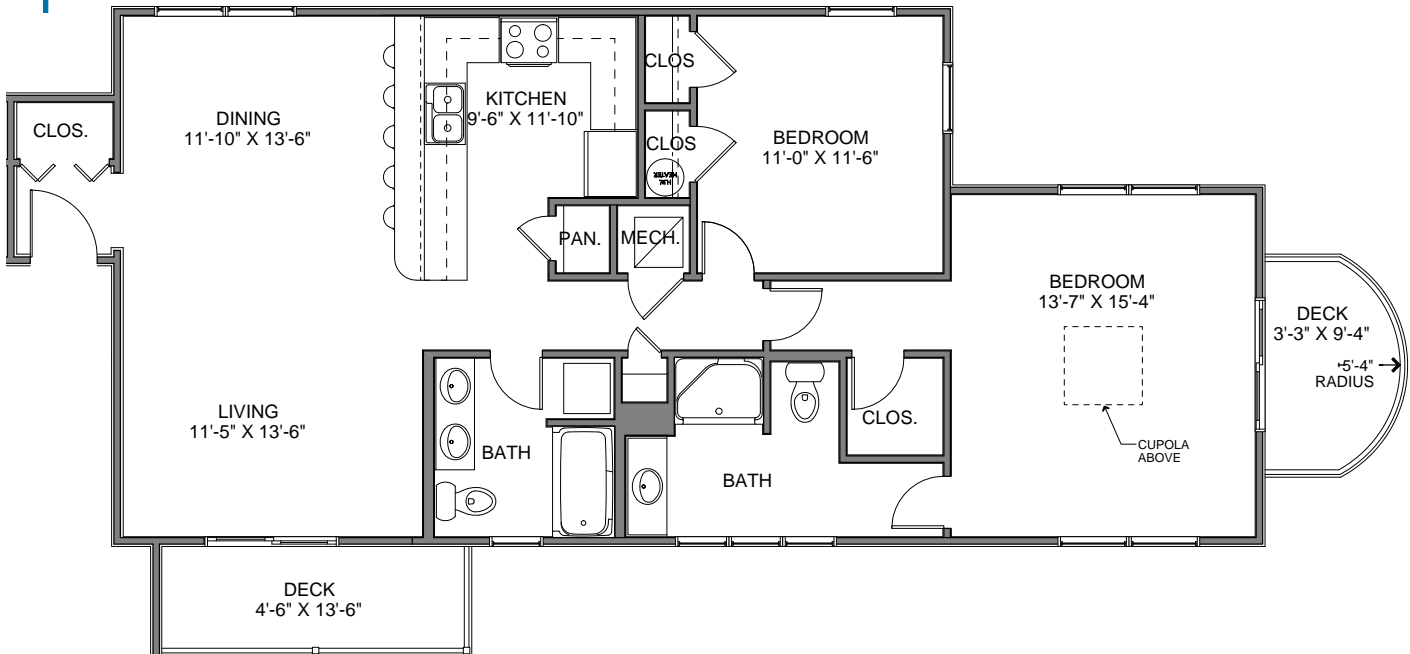
# TASMAN

2 Bedroom

2 Bathroom

## FEATURES

- Approx. 1,140 square feet
- Lake views
- Two outdoor decks
- Granite | Marble | Corian countertops
- Professional grade appliances
- Hardwood floors in living, dining and kitchen
- Master w/walk-in closet
- Central air conditioning | heating
- Washer & dryer



Note: These floor plans are for illustrative purposes only. Dimensions are approximate and are subject to change.

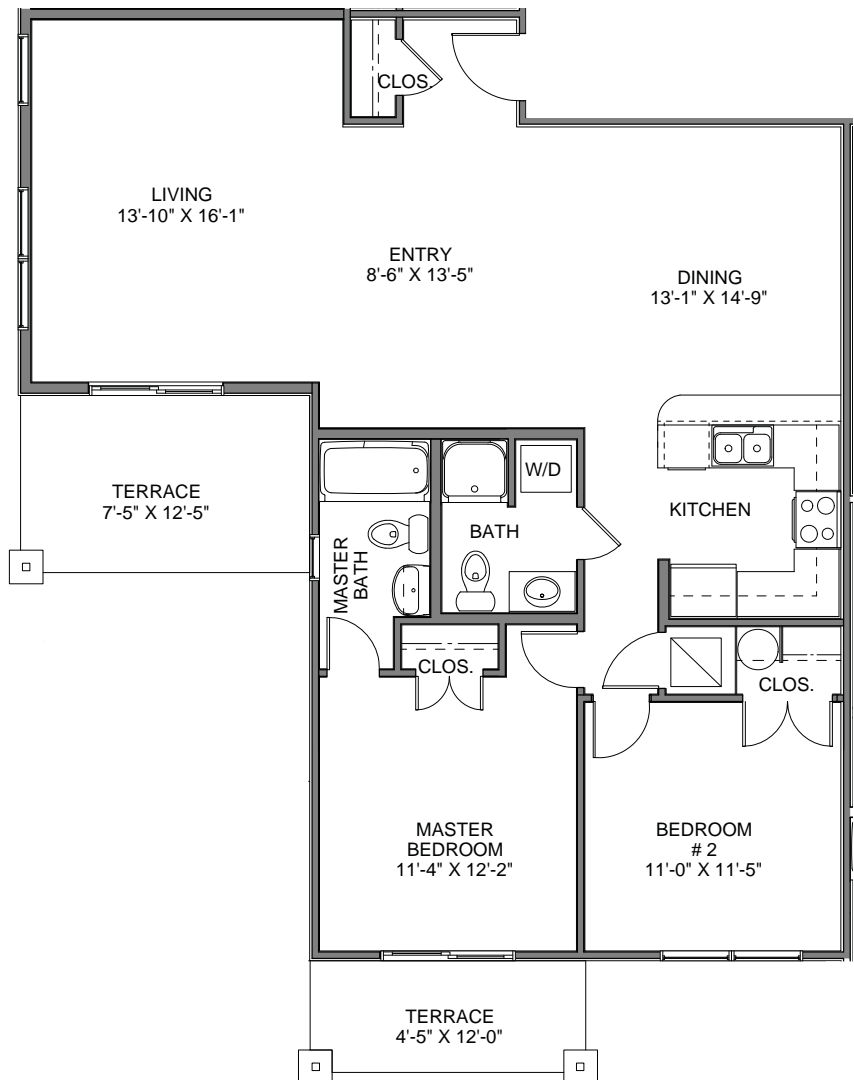


# TIGRIS

- 2 Bedroom
- 2 Bathroom

## FEATURES

- Approx. 1,120 square feet
- Two outdoor patios
- Granite countertops
- Stainless steel appliances
- Central air conditioning | heating
- Washer & dryer



Note: These floor plans are for illustrative purposes only. Dimensions are approximate and are subject to change.



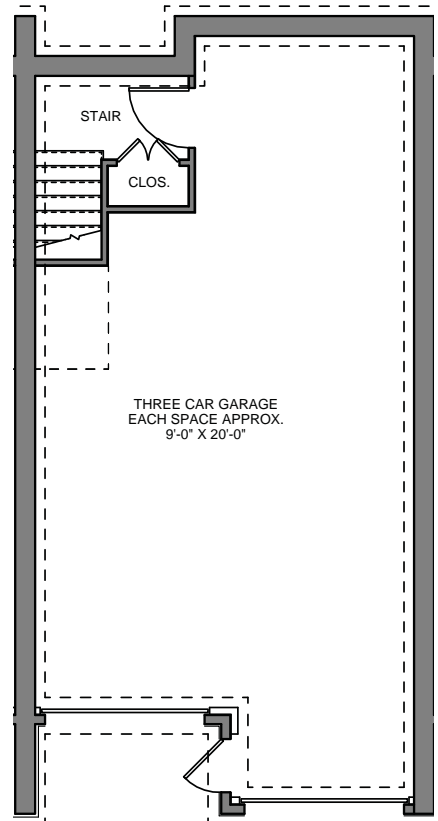
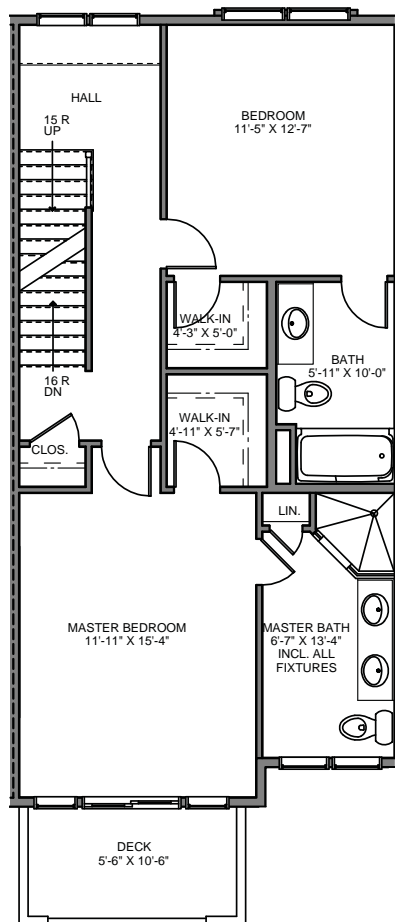
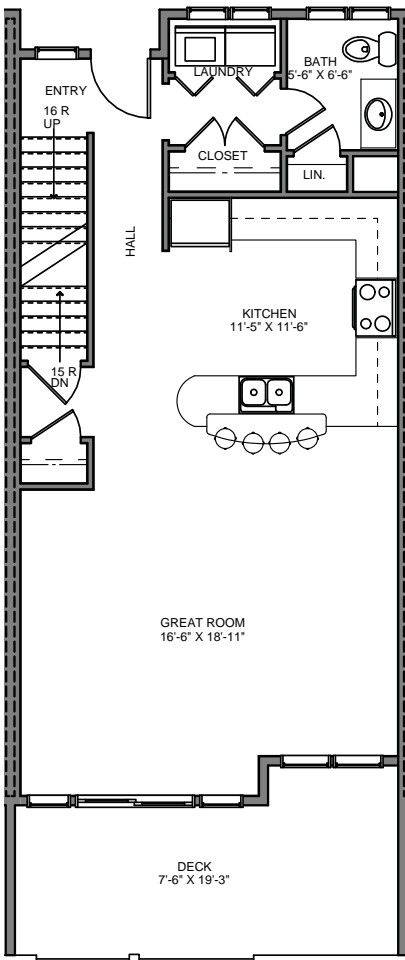
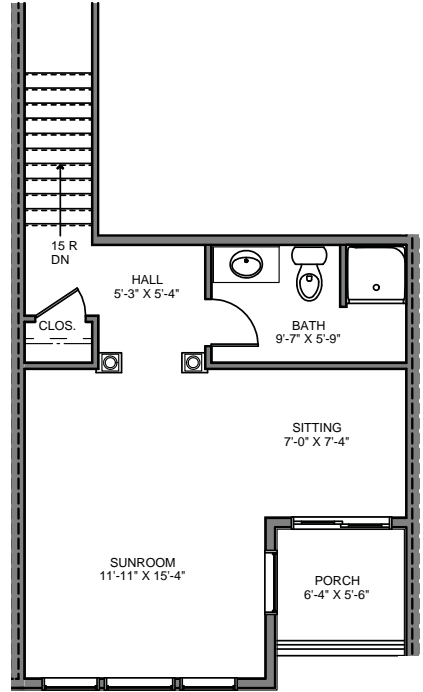
# CORAL

2 Bedroom + Sunroom | Den

3.5 Bathroom

## FEATURES

- Approx. 1,800 square feet
- Water views
- Three car garage
- Three outdoor decks
- Great Room w|gas fireplace
- Granite | Marble | Corian countertops
- Professional grade appliances
- Hardwood floors throughout
- Master w|walk-in closet
- Central air conditioning | heating
- Washer & dryer



Note: These floor plans are for illustrative purposes only. Dimensions are approximate and are subject to change.



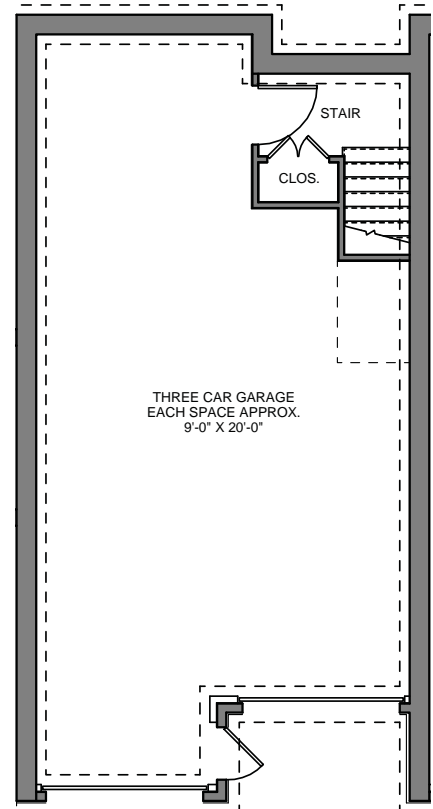
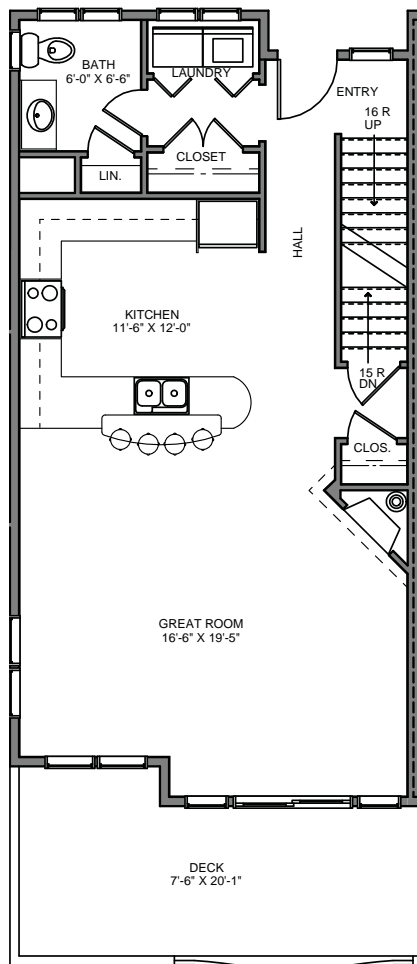
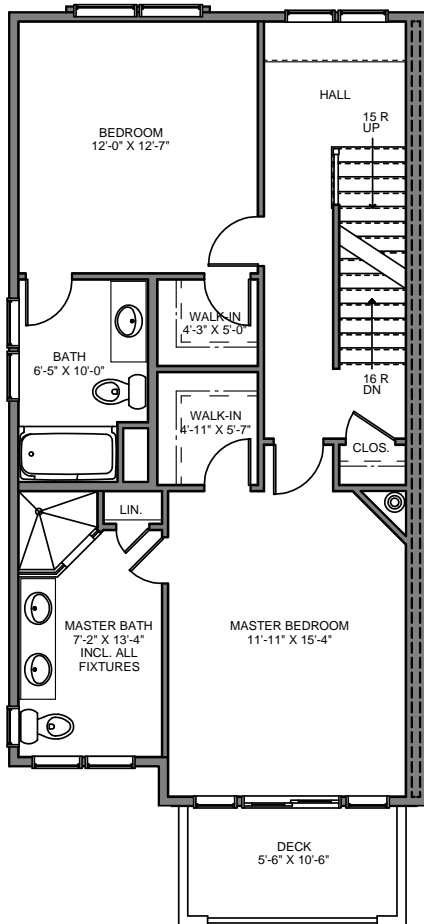
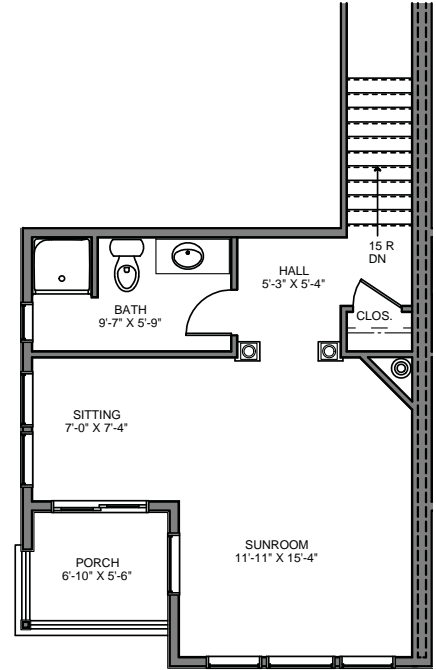
# CORAL REVERSE

2 Bedroom + Sunroom | Den

3.5 Bathroom

## FEATURES

- Approx. 1,800 square feet
- Water views
- Three car garage
- Three outdoor decks
- Great Room w|gas fireplace
- Granite | Marble | Corian countertops
- Professional grade appliances
- Hardwood floors throughout
- Master w|walk-in closet
- Central air conditioning | heating
- Washer & dryer



Note: These floor plans are for illustrative purposes only. Dimensions are approximate and are subject to change.