



2 BEDROOM + SUNROOM | DEN

FLOOR PLAN OPTIONS

The floor plans on the following pages are available as *2 Bedrooms + Sunroom/Den* condominiums at Surfside.

- Celtic
- Galilee
- Hudson

Note: These floor plans are for illustrative purposes only. Dimensions are approximate and are subject to change.



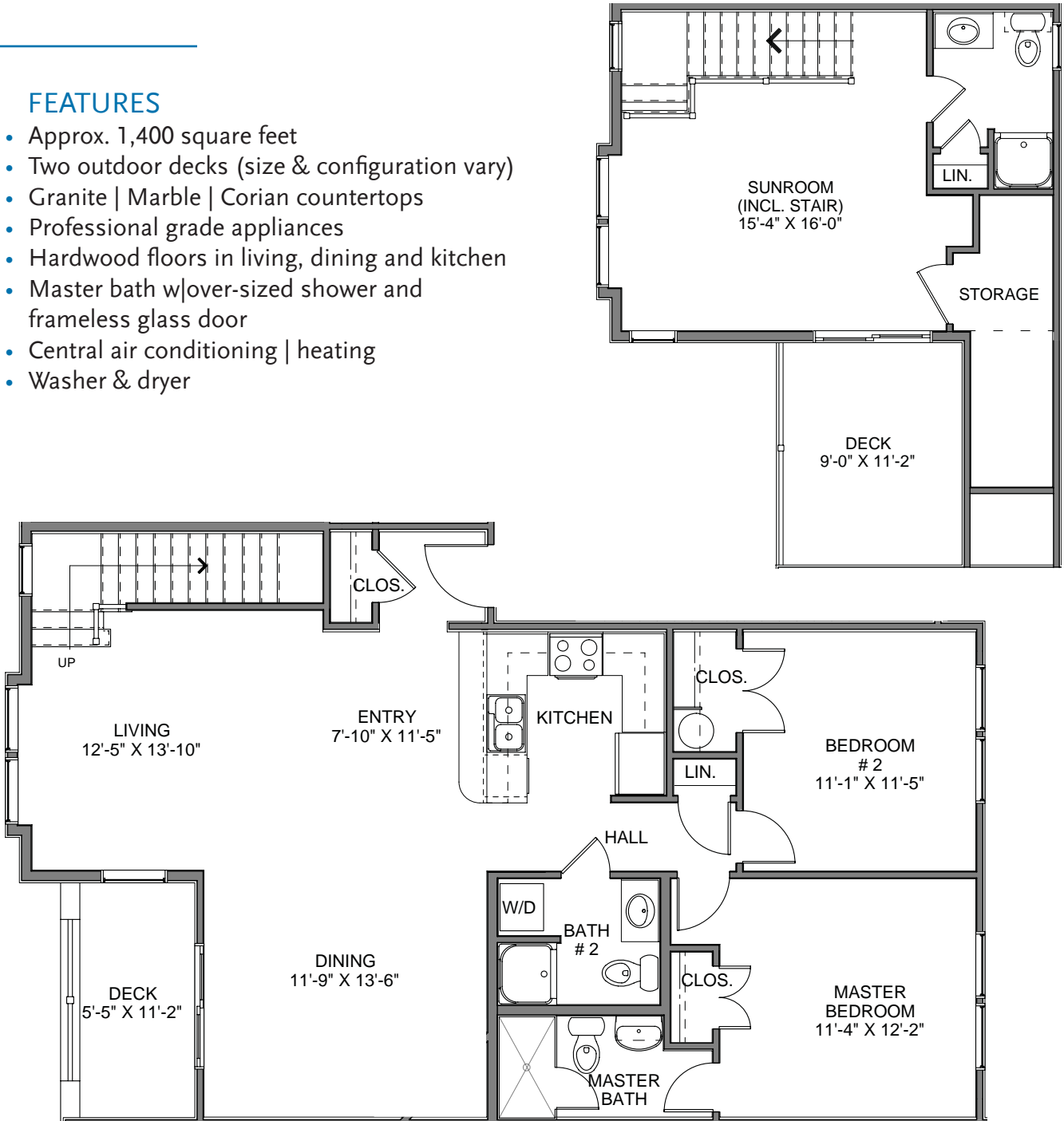
CELTIC

2 Bedroom + Sunroom | Den

3 Bathroom

FEATURES

- Approx. 1,400 square feet
- Two outdoor decks (size & configuration vary)
- Granite | Marble | Corian countertops
- Professional grade appliances
- Hardwood floors in living, dining and kitchen
- Master bath w/over-sized shower and frameless glass door
- Central air conditioning | heating
- Washer & dryer



Note: These floor plans are for illustrative purposes only. Dimensions are approximate and are subject to change.



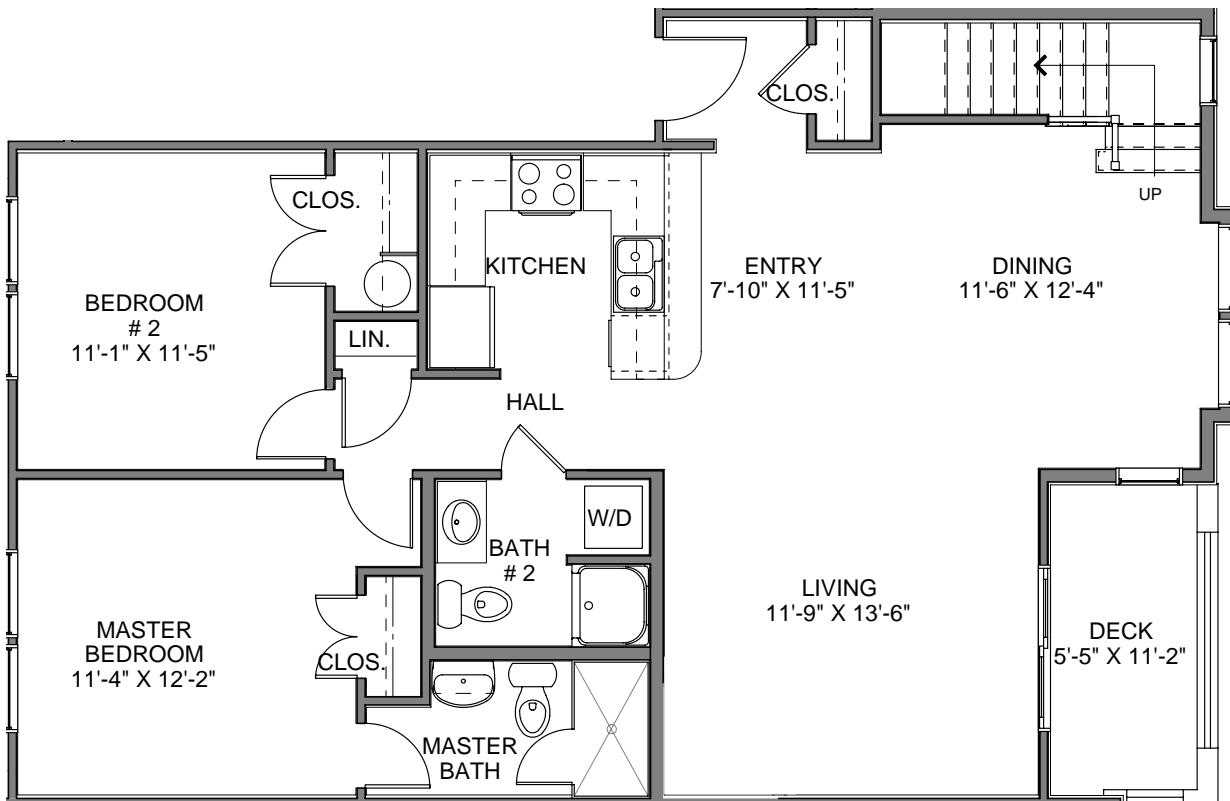
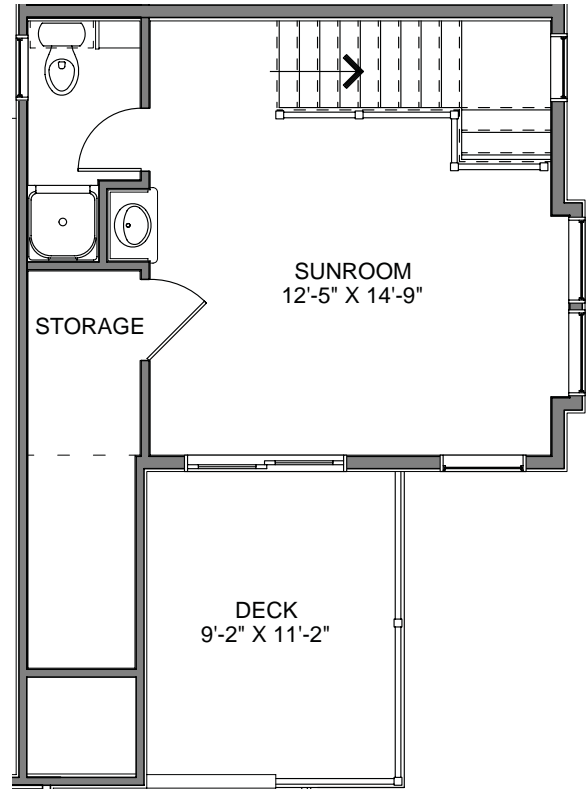
CELTIC REVERSE

2 Bedroom + Sunroom | Den

3 Bathroom

FEATURES

- Approx. 1,400 square feet
- Two outdoor decks
- Granite | Marble | Corian countertops
- Professional grade appliances
- Hardwood floors in living, dining and kitchen
- Master bath w/over-sized shower and frameless glass door
- Central air conditioning | heating
- Washer & dryer



Note: These floor plans are for illustrative purposes only. Dimensions are approximate and are subject to change.



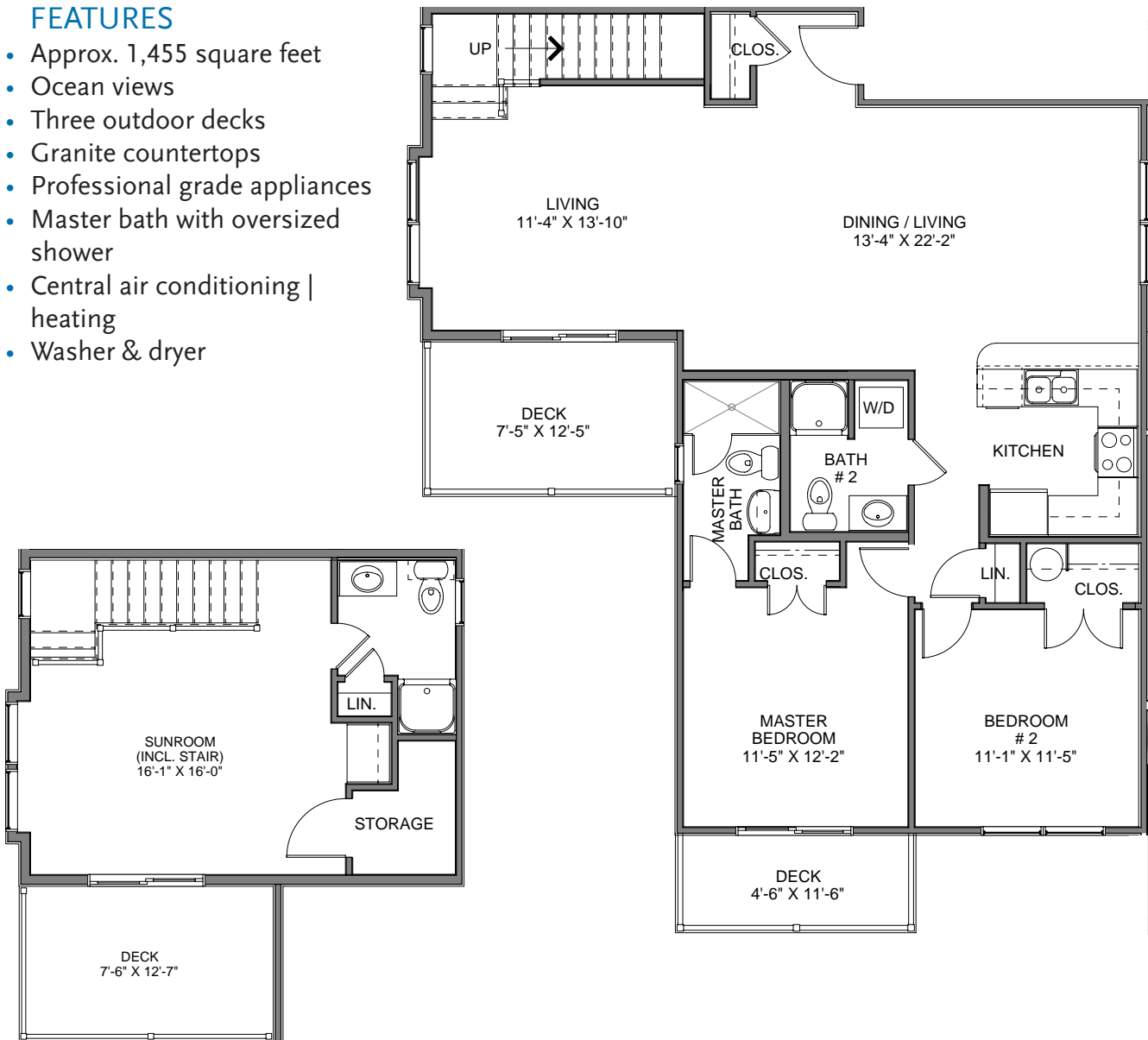
GALILEE

2 Bedroom + Sunroom | Den

3 Bathroom

FEATURES

- Approx. 1,455 square feet
- Ocean views
- Three outdoor decks
- Granite countertops
- Professional grade appliances
- Master bath with oversized shower
- Central air conditioning | heating
- Washer & dryer



Note: These floor plans are for illustrative purposes only. Dimensions are approximate and are subject to change.



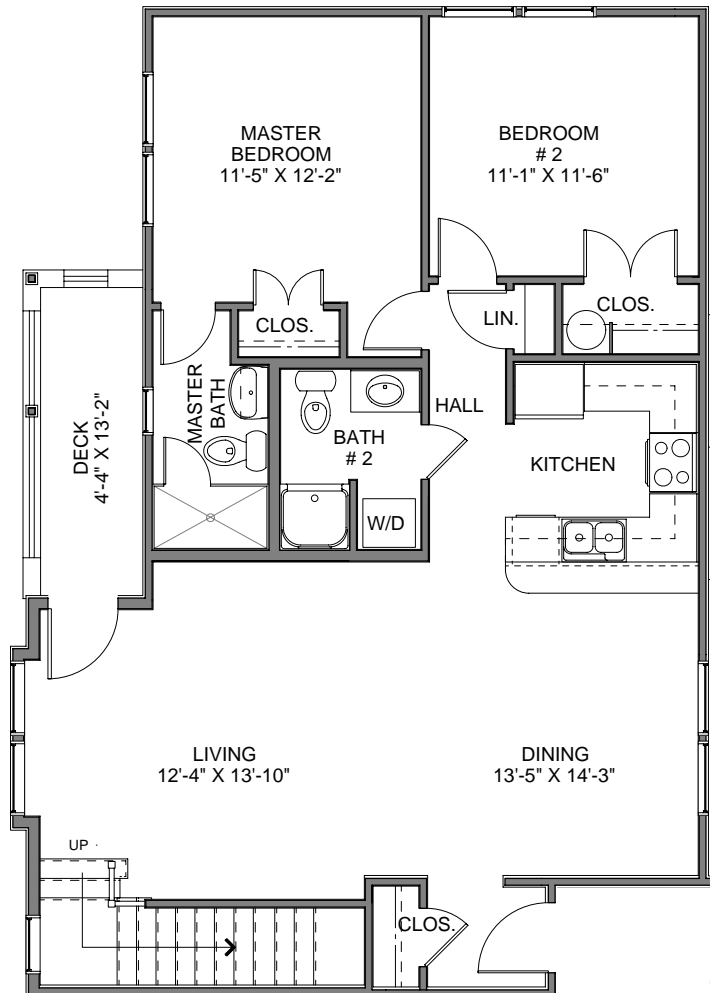
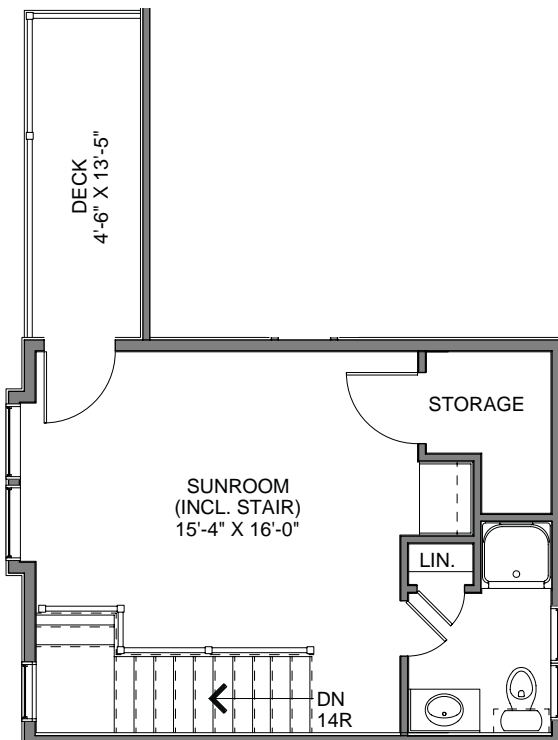
HUDSON

2 Bedroom + Sunroom | Den

3 Bathroom

FEATURES

- Approx. 1,300 square feet
- Two outdoor decks (size & configuration vary)
- Granite | Marble | Corian countertops
- Professional grade appliances
- Hardwood floors in living, dining and kitchen
- Master bath w|over-sized shower and frameless glass door
- Central air conditioning | heating
- Washer & dryer



Note: These floor plans are for illustrative purposes only. Dimensions are approximate and are subject to change.



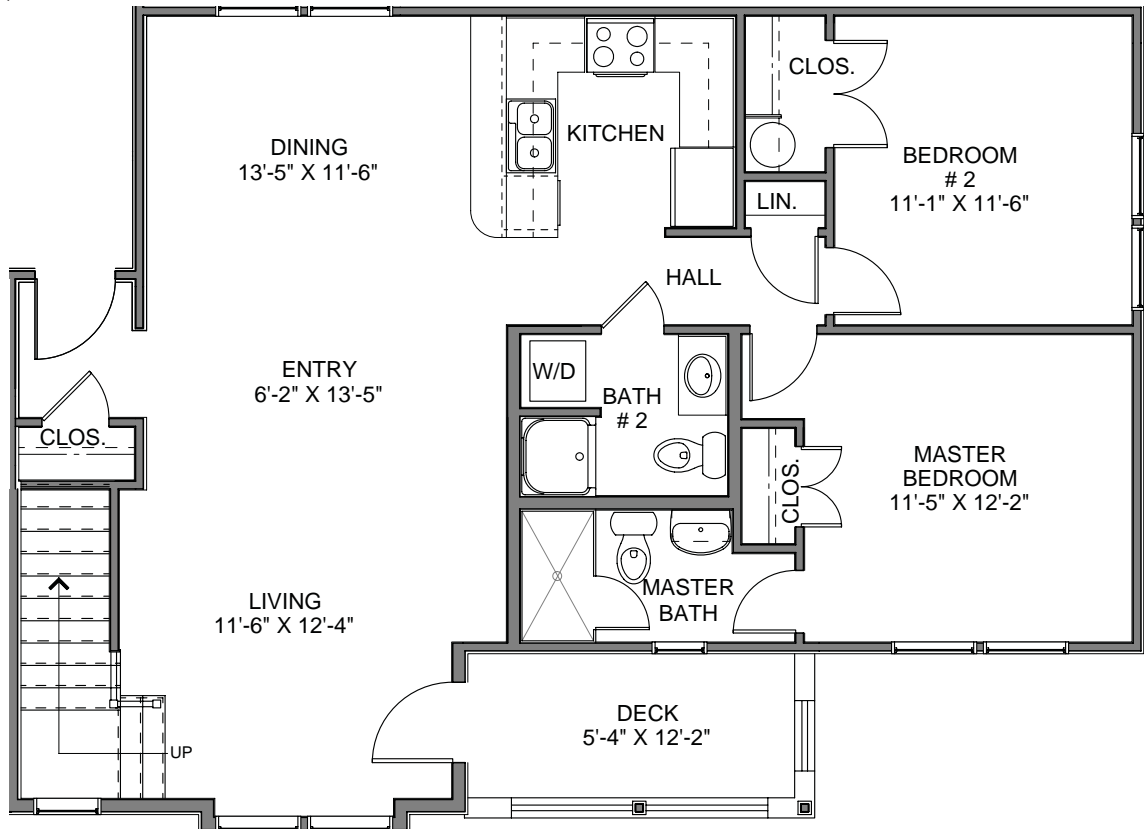
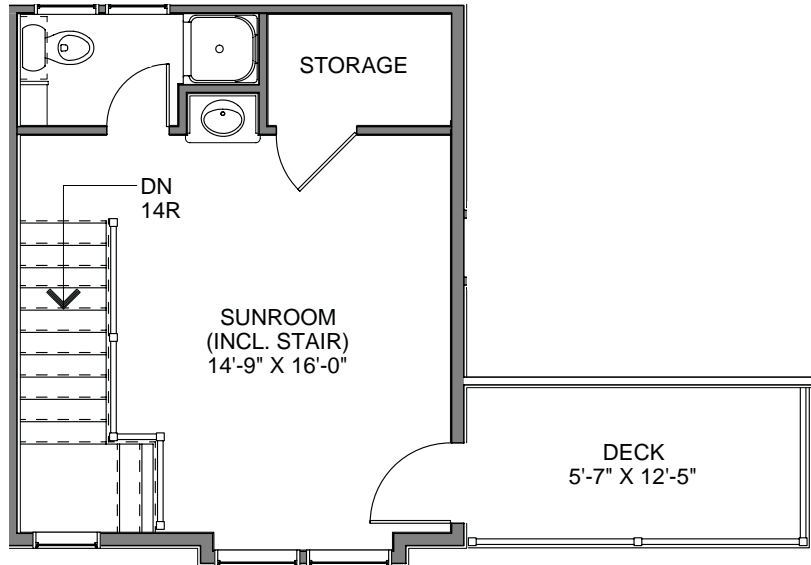
HUDSON REVERSE

2 Bedroom + Sunroom | Den

3 Bathroom

FEATURES

- Approx. 1,300 square feet
- Two outdoor decks (size & configuration vary)
- Granite | Marble | Corian countertops
- Professional grade appliances
- Hardwood floors in living, dining and kitchen
- Master bath w/over-sized shower and frameless glass door
- Central air conditioning | heating
- Washer & dryer



Note: These floor plans are for illustrative purposes only. Dimensions are approximate and are subject to change.